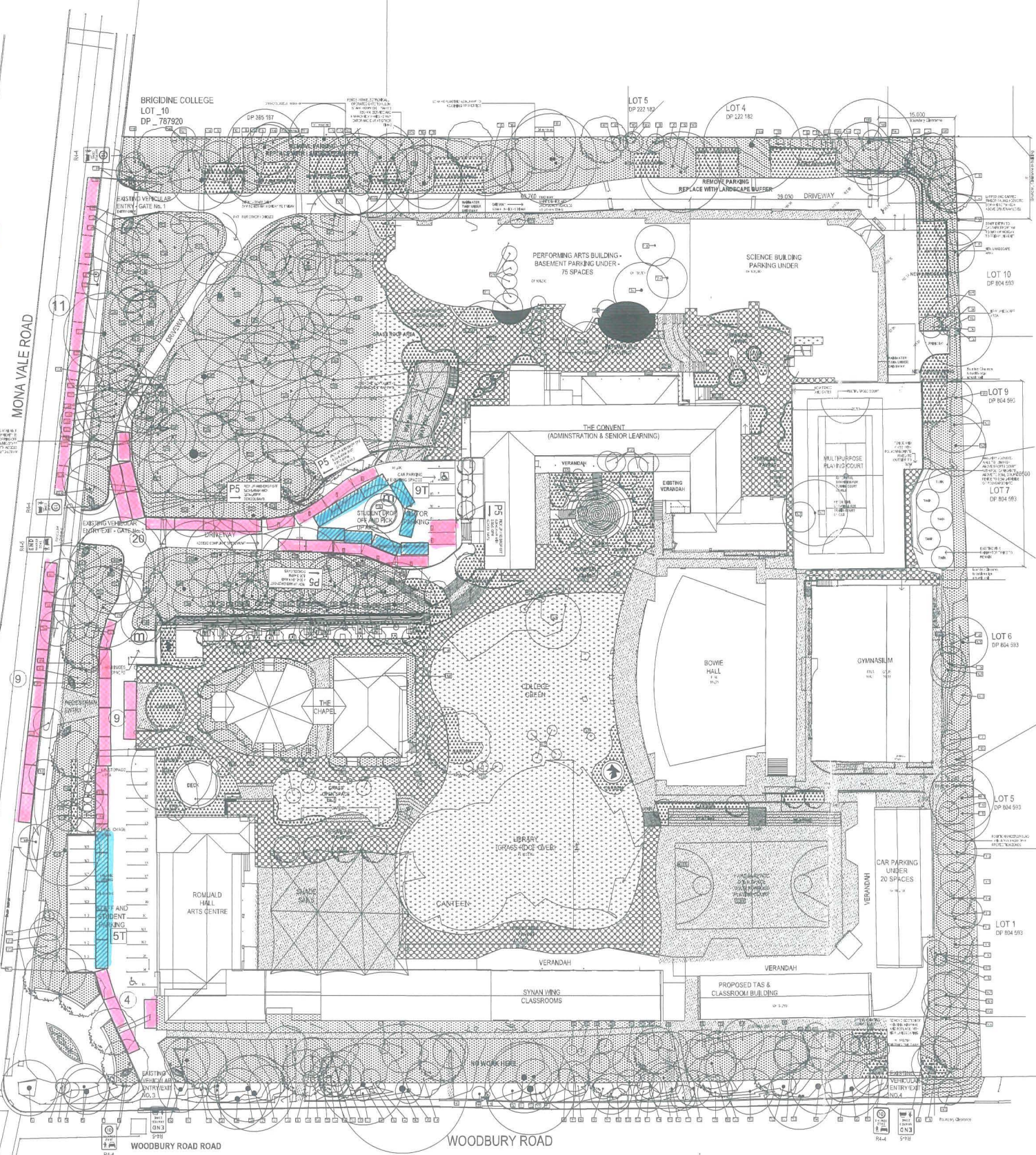


Note: Parking is no longer available on Mona Vale Road until after 7pm



REVISED INFORMAL & TANDEM PARKING
MANAGEMENT PLAN

FORMAL PARKING

FRONT OF ADMIN	4
FRONT OF CHAPEL	2 MINI BUSES
SOUTH WEST CORNER	27

BASEMENT PARKING

SOUTH EAST CORNER	20
SCIENCE AND ARTS BUILDING	75

SUB TOTAL 126 PLUS 2 MINI BUSES

INFORMAL PARKING (shown as)

MONA VALE ROAD WEST	23
MONA VALE ROAD EAST	20
DRIVEWAY TO ADMIN BUILDING	20
SOUTH WEST CAR PARK AND DRIVEWAY	13

SUB TOTAL 76

TANDEM PARKING (shown as)

MAIN DRIVEWAY TO ADMIN BUILDING	9
SOUTH WEST CAR PARK AND DRIVEWAY	5

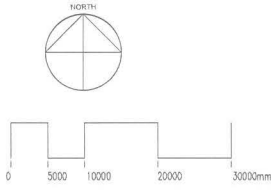
BASEMENT PARKING

UNDER SCIENCE AND ARTS BUILDING	16
---------------------------------	----

SUB TOTAL 30

TOTAL SPACES 232 PLUS 2 MINI BUSES

- NOTES: 1. FOR PARKING IN BASEMENTS UNDER THE STAGE 5 TAS & CLASSROOM BUILDING, SCIENCE BUILDING AND PERFORMING ARTS BUILDING SEE PLAN CC SHEET 6A OF DRAWING NO. 1940-12
2. THE LOCATION OF TRAFFIC MARSHALLS WHEN THE INFORMAL OR INFORMAL PLUS TANDEM PARKING SPACES ARE IN USE ARE DENOTED BY THE LETTER **m**
3. THE SIGN POSTING IN THE STUDENT DROP-OFF AND PICK-UP AREA ARE SHOWN ON CC SHEET 7B OF DRAWING NO 1940-12



BASE DRAWING DA103 PROPOSED SITE PLAN PREPARED BY
FULTON TROTTER ARCHITECTS

No.	DATE	APPD	BASE PLAN BY FULTON TROTTER ARCHITECTS L3, 35 SPRING STREET BONDI JUNCTION NSW 2022 BANKSTOWN NSW 2200 PH: (02)9359 5941 www.fultontroutter.com.au	LYLE MARSHALL & ASSOCIATES PTY. LTD. CONSULTING ENGINEERS, TRANSPORTATION, ENVIRONMENTAL PLANNERS & ARCHITECTS SUITE 8 871 PACIFIC HIGHWAY CHATSWOOD N.S.W 2067 phone: (02) 9419 8191 faxsimile: (02) 9419 8107 email: lylemarshall@ozemail.com.au	CLIENT: BRIGIDINE COLLEGE 325 MONA VALE ROAD ST IVES LAYOUT OF INFORMAL AND TANDEM PARKING MANAGEMENT PLAN AT GROUND AND BASEMENT LEVEL	SCALE 1:500(A1)	PASSED	DATE FIRST ISSUED JULY 2012
A	05.07.12					DESIGN LMA	SHEET No. CC-5B	DRAWING No. 1940-12
B	10.07.12					DRAWN EMMC	OF	
						CHECKED GLM		